



Head Office / Factory

48, Toegyegongdan 1-gil, Chuncheon-si, Gangwon-do, Korea

Sales Office / R&D Center

15, Jeonpa-ro 62beon-gil, Manan-gu, Anyang-si, Gyeonggi-do 14086, Korea
Tel +82-31-441-2881 Fax +82-31-441-2883 Website www.vericom.co.kr
Email vericom@vericom.co.kr / overseas@vericomdental.com

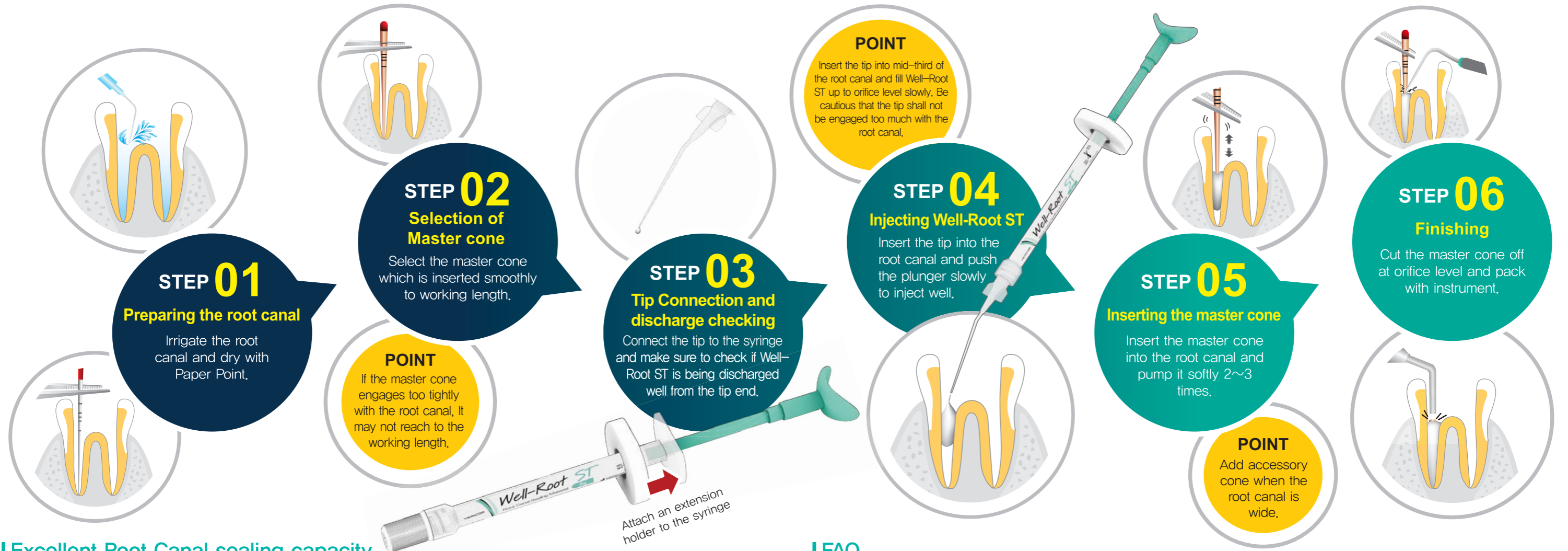
Date of issue 2020.05.28 Clinical Guideline_ENG_Rev.1

Well-Root ST

Clinical Guideline

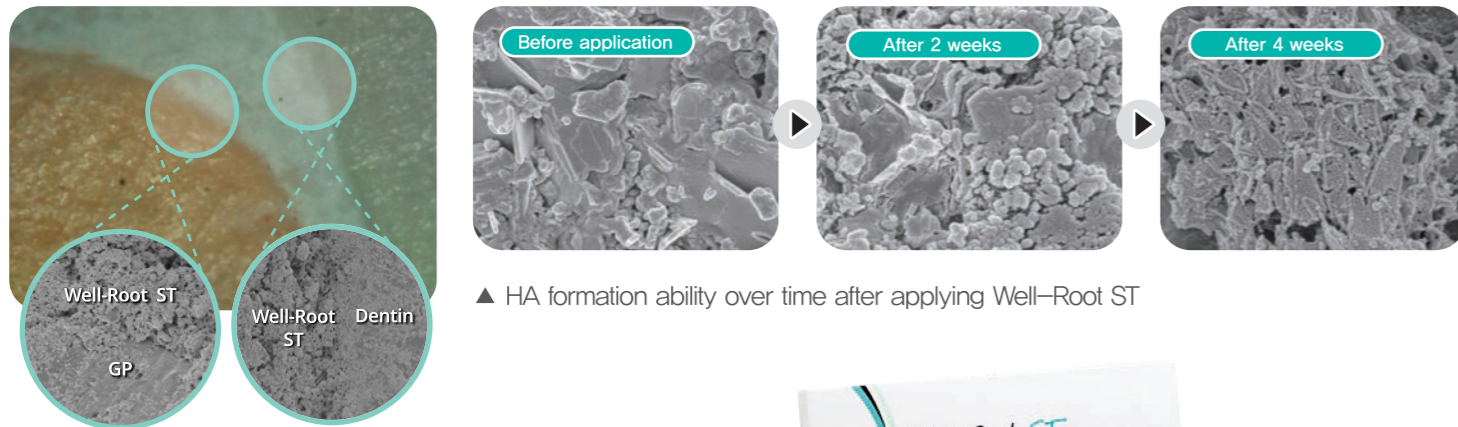


www.vericom.co.kr



Excellent Root Canal sealing capacity

When curing, Calcium ion inside of body fluid reacts with Phosphate ion. From this chemical bond, HA interface will be made between Root Canal Wall and Sealer so it has excellent sealing capacity.



Type	Content
Kit	2g syringe x 1ea, Disposable tip 20ea, Extension holder



FAQ

Q1. What is the setting time?

A . Well-Root ST will be set by reacting with moisture remaining in the root canal when applied inside of it, Initial setting time : 25min, Full setting time : 150min

Q2. Isn't the tip clogged?

A . The particles of Well Root ST are uniformly mixed throughout and very low reactivity with moisture in the air. Because of this, it is not clogged if it is not left for a long time and does not come in direct contact with the moisture. Please use the disposable tip for the purpose of Sanitation and infection control.

Q3. Can I use other tips besides the enclosed tips?

A . You may use other tips as well, However, tip clogging may occur depending on the gauge or tip shape, so we recommend you to use the tip provided in the package. When using different tips, do not use a tip with a smaller diameter than the tip provided.

Q4. I wonder if discoloration occurs

A . Well-Root ST does not cause discoloration. It does not contain Bismuth Oxide, which causes discoloration in the teeth. Combined with collagen tissue, black precipitates can form at interface, causing discoloration.

Q5. Is it easy to remove when retreated?

A . Removal method is same as the one with Gutta Percha. Since the bonding strength between the root canal wall and the Well-Root ST is not stronger than that of the Well-Root ST and dentin itself, you can remove it using files, instrument and etc.

Q6. When performing Continuous Wave Technique, Can we use Well-Root ST ?

A . Yes it can be used because the chemical structure of the material does not change due to the heat generated by the equipment when filling the root canal with CWT. However, for our safety measures & convenient care, it is highly recommended that Well-Root ST be used in accordance with the applicable guidelines.

Q7. Can it be used in Perforation Case?

A . Well-Root ST is a bioceramic sealer with flowability, so it is not proper to use in perforation case. In case of perforation case, we recommend to use Well-Root PT.



Well-Root PT
Premixed Bioceramic Putty

- Pulp capping
- Root-end filling
- Repair of perforation
- Apexification